

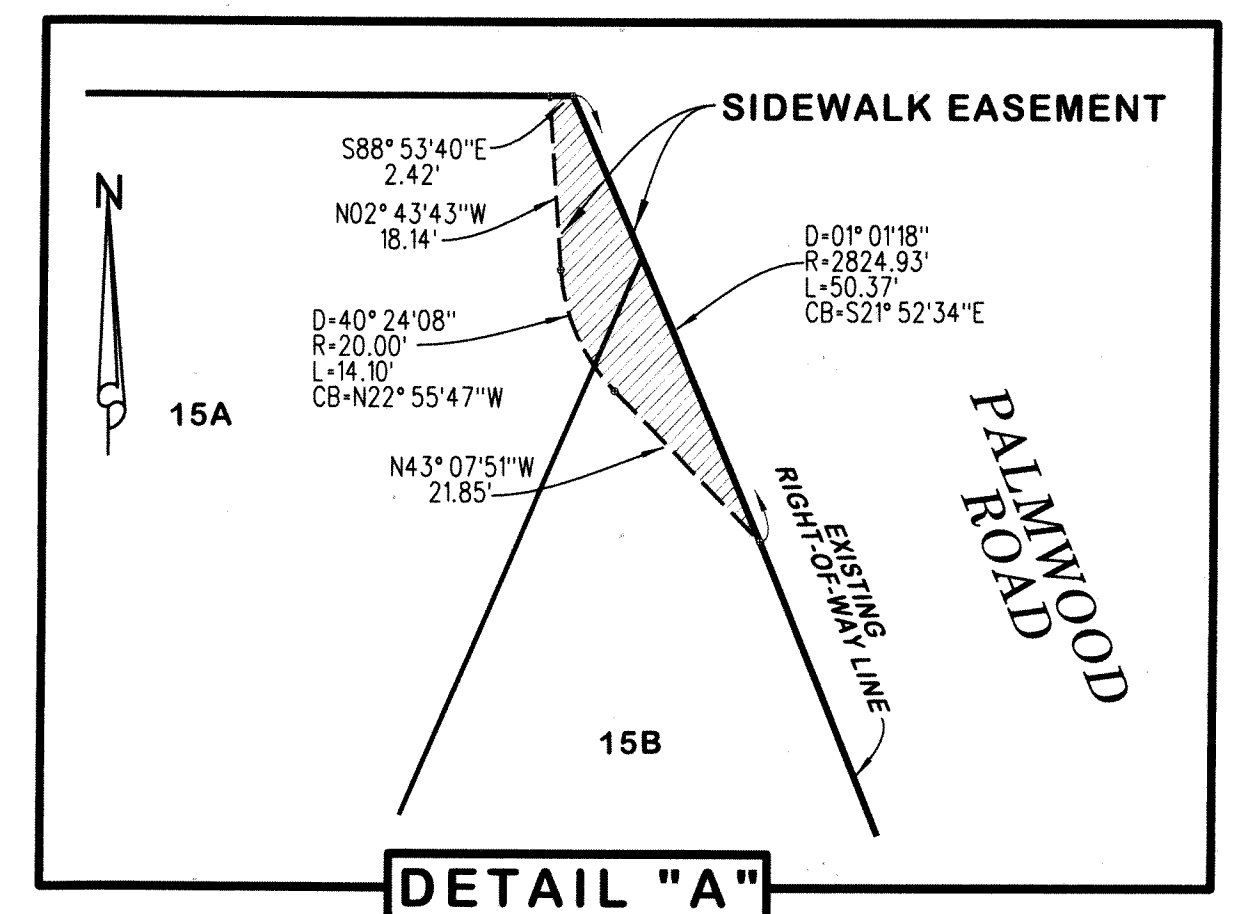
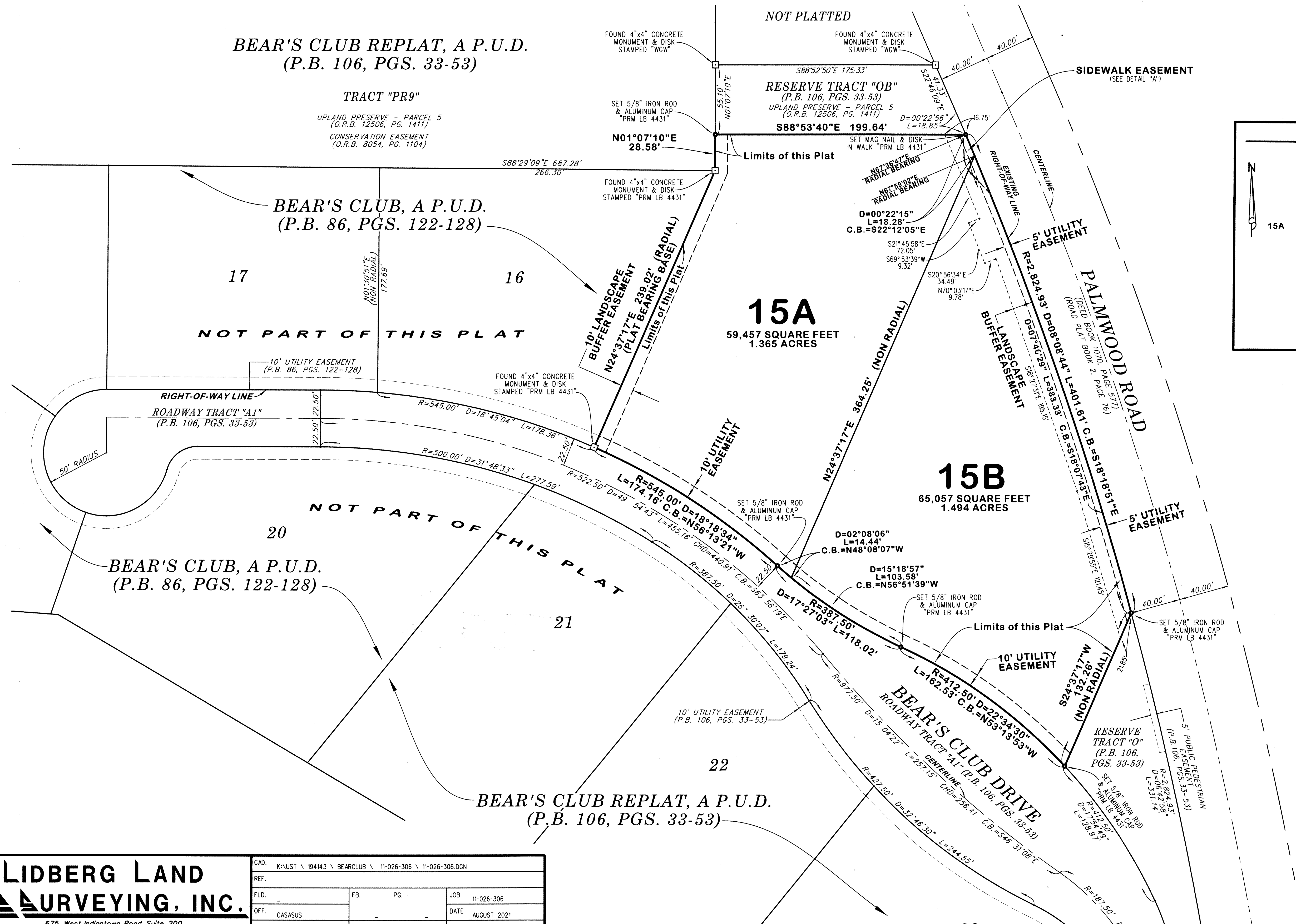
BEAR'S CLUB REPLAT OF LOT 15, A P.U.D.

BEING A REPLAT OF LOT 15, AS SHOWN ON THE PLAT OF BEAR'S CLUB REPLAT, A P.U.D.,
 RECORDED IN PLAT BOOK 106, PAGES 33 THROUGH 53, PUBLIC RECORDS OF PALM BEACH COUNTY, FLORIDA
 LYING IN SECTION 20, TOWNSHIP 41 SOUTH, RANGE 43 EAST
 TOWN OF JUPITER, PALM BEACH COUNTY, FLORIDA

AUGUST 2021

151

SHEET 2 OF 2



LIDBERG LAND SURVEYING, INC.			
675 West Indiantown Road, Suite 200, Jupiter, Florida 33458 TEL. 561-746-8454			
CAD. K:\JUST \ 194143 \ BEARCLUB \ 11-026-306 \ 11-026-306.DGN	REF.	FB.	PG.
FLD.			JOB 11-026-306
OFF. CASASUS			DATE AUGUST 2021
CKD. D.C.L.	SHEET 2 OF 2	DWG. D11-026P	

- ABBREVIATIONS:**
- C.B. = CURVE'S CHORD BEARING
 - CHD = CURVE'S CHORD DISTANCE
 - D = CURVE'S DELTA ANGLE
 - L = CURVE'S ARC LENGTH
 - LB = BUSINESS LICENSE
 - O.R.B. = OFFICIAL RECORD BOOK
 - P.B. = PLAT BOOK
 - P.U.D. = PLANNED UNIT DEVELOPMENT
 - PG. = PAGE
 - PGS. = PAGES
 - PRM = PERMANENT REFERENCE MONUMENT
 - R = CURVE'S RADIUS